

WBEC GREATER DMV
WOMEN'S BUSINESS ENTERPRISE COUNCIL

BUSINESS
CONTENT

BUILDING
COMMUNITY

GROWTH
CONNECTIONS

THE POWER OF

Agility

2023
Annual
Awards
Breakthrough
Breakfast

November 17, 2023

The Willard Intercontinental Hotel, DC

Board of Directors

Sandra Eberhard
President & CEO
WBEC Metro NY and
Greater DMV Inc

Mary McEvoy
Chair
PepsiCo

Avis Yates Rivers
Vice-Chair
Technology Concepts
Group International

Charlene Vickers
Chair-Elect
Johnson & Johnson

Jennifer Collins
Vice-Chair Greater DMV
JDC Events

Lynne Marie Finn
Vice Chair Metro NY
Broadleaf Results Inc.

Rose Hatcher
Paramount

Wendy Wellener
Dominion Resources

Ann Ramakumaran
Ampcus Inc.

Mariama O. Davis
EY

Charles Spearman
Guggenheim Partners

Susan Feiner
FIS Global

Jeanine Pedoto
Prudential

Wendy Shen
FLOMO/Nygala Corp

Elisabete Miranda
CQ Fluency

Reuben Essandoh
Capital One

Nancy Geenen
Flexibility LLC

Jon Suber
MassMutual

Kimberly Ayers
AARP

Cheryl Hofmeister
Organon

Michelle Buonfiglio
JP Morgan Chase

Staff

Sandra Eberhard
President & CEO

Leandra Joseph
Chief Operating Officer

Stephanie DeMizio
Director, Programming

Sigourney Norman
*Director, Business Development
& Strategic Partners*

Deena Parker
*Certification Manager,
Greater DMV*

Vanessa Foster
*Growth and Retention Specialist,
Greater DMV*

Ana Ramos
Program Manager, Metro NY

Patrick Gaeta
Operations Manager

Diana Camosy
*Certification Coordinator,
Greater DMV*

Monica Ballen
*Certification Coordinator,
Greater DMV*

Sharon Gutierrez
*Certification Coordinator,
Greater DMV*

Melissa Horne
Bookkeeper

Tashia Sewell
*Certification Coordinator,
Greater DMV*

Thank You to Our Event Sponsors

PLATINUM



DIAMOND



PRESTIGE



WBE



EXHIBIT EDGE



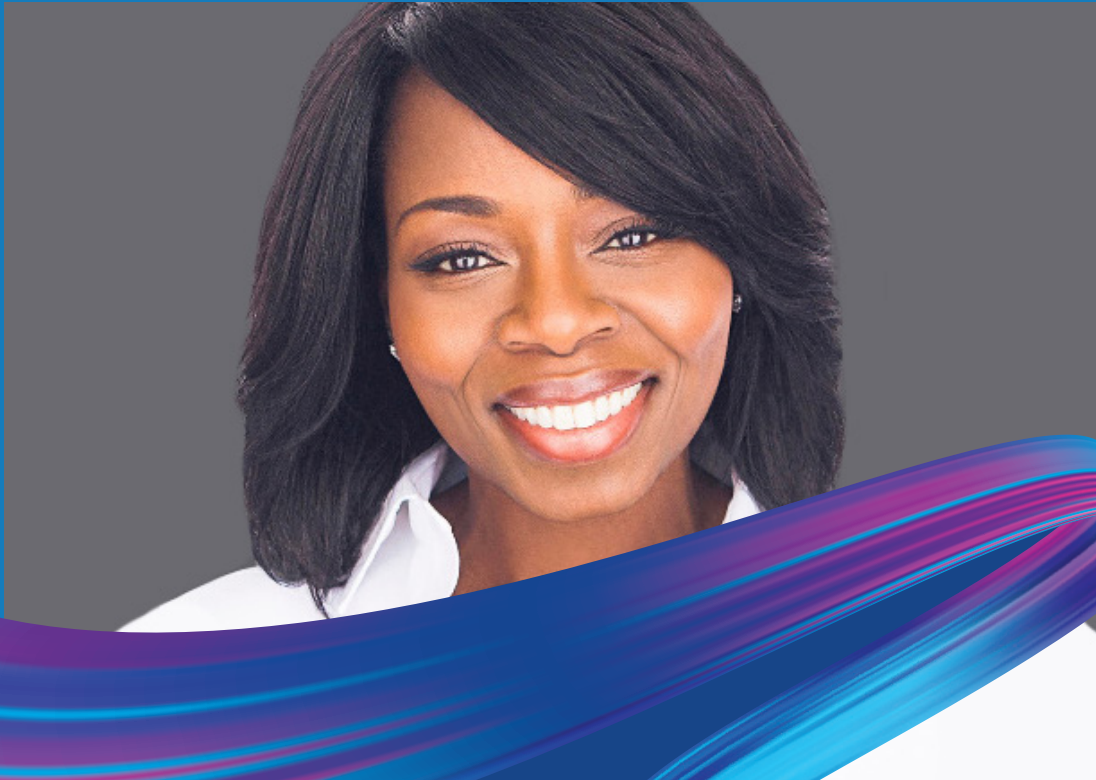
Program Agenda

9:00	Morning Greeting & Breakfast Served
9:30	Welcoming Remarks Mo Barrett <i>Program Emcee, Mo Barrett LLC</i> Sandra Eberhard <i>President and CEO, WBEC Metro NY and Greater DMV Inc.</i> WBENC Greetings Angela Dingle <i>Acting President and CEO, Women Impacting Public Policy (WIPP)</i> Wendy T. Wellener <i>Board Chair, WBEC Metro NY and Greater DMV Inc.</i> <i>Vice President Shared Services, Dominion Energy</i>
9:50	Corporate Panel: The Impact of AI on The Supply Chain Sandra Eberhard <i>President and CEO, WBEC Metro NY and Greater DMV Inc.</i> Ann Ramakumaran <i>CEO, Ampcus Inc.</i> Chantel Edwards <i>Director in Cyber Operations and Intelligence, Capital One</i> Srilakshmi Kumar <i>Senior Advisor, AI and Emerging Technology Working Group, USPTO</i>
10:15	WBE Spotlight: Greater DMV 2023 Pitch Competition Finalists Liz Whitehead <i>CEO, 12PointFive</i> Emmalyne Head <i>Founder, Southern Belle Cleaners</i> Gina D. Weatherup <i>CEO, Chantilly Mediation & Facilitation</i> Jovan Jackson <i>Registered Investment Advisor, Good News Financial Services</i> Dr. Renette Dallas <i>CEO, Life by Dallas Inc.</i>

Program **Agenda** *(cont'd)*

10:45	<p>Keynote Address: Crash! Leading through the Wreckage</p> <p>Carla Moore <i>CEO and Founder, Growth Unlimited LLC</i></p>
11:20	<p>2023 Done Deals™ Awards Presentation</p> <p>Leandra Joseph <i>COO, WBEC Metro NY and Greater DMV Inc.</i></p> <p>2023 Corporate Opportunity Award, DMV Region</p> <p>2023 Corporate Champion Award, DMV Region</p> <p>2023 Public Sector Awards, DMV Region</p> <p>2023 Annual Awards Presentation</p> <p>Leandra Joseph <i>COO, WBEC Metro NY and Greater DMV Inc.</i></p> <p>2023 Outstanding Corporation Award, DMV Region</p> <p>2023 Outstanding Women’s Business Advocate Award, DMV Region</p> <p>2023 Public Sector Award, DMV Region</p> <p>2023 Presidents Award Presentation</p> <p>Sandra Eberhard <i>President and CEO, WBEC Metro NY and Greater DMV Inc.</i></p> <p>Closing Remarks</p>
12:00 - 1:00pm	<p>Networking & WBE and Corporate Showcase</p>

Keynote Speaker



Carla Moore

CEO and Founder, Growth Unlimited LLC

Carla Moore is CEO and Founder of Growth Unlimited LLC, a leadership transformation consultancy specializing in talent management, organizational development, executive learning, brand innovation and product growth.

She is former Vice President of Sales Strategy for Home Box Office (HBO) in New York. She helped to redefine the company's brand training narrative, discover new sales approach strategies, develop specialized sales training curriculum and continuous education programs for HBO sales brand ambassadors.

Carla earned her BS at Middle Tennessee State University and MBA at Keller Graduate School of Management in Chicago. She is the graduate of two leading industry programs: CTAM U at Harvard Business School and NAMIC Executive Leadership Program at Darden School of Business at UVA. Her most fulfilling work is through her community service as a member of Delta Sigma Theta Sorority, Inc and her church activities.

Today, Carla is a leadership author, transformation speaker and certified professional coach. She is passionate about sharing her story and has engaged over 1 million people through her public speaking and life coaching. Her book *CRASH! Using Personal Power to Transform Your Leadership* captures the lightening moment that led to Carla's epiphany about the role of personal transformation in improving leadership. Her book became an Amazon Top 50 Bestseller on the day of release.

Last August Carla ran for public office in her hometown and was elected County Commissioner for District 6. She is the only woman on the commission and the only diverse elected official in Hickman County, TN.

Carla has been featured in the Chicago Tribune, Forbes Magazine, Cosmopolitan Magazine, Bold TV, SiriusXM and other various media outlets. Her mission is to inspire others to "live the life you've imagined!"

Program Speakers



Mo Barrett

CEO, Mo Barrett LLC



Whether in Air Force cockpits, combat bare-base environments, barbershop quartets or parental caregiving Mo Barrett is a Catalytic Comedian, using humor to change the way you laugh, learn and think.

She has dealt with the shame, stigma, struggle and success of being a life-long nonconformist and lesbian in the military's structured environment. She retired as a Colonel after nearly 30 years in uniform, leveraging hard work, positivity and perspective. She has survived and thrived as a multi-minority and connects with audiences of all ages and walks of life, using contagious energy and eye-roll-worthy jokes to help people laugh, learn and think (in that order).

Many eye rolls await you in her book, "Pardon My Quirk, Anecdotes to Make You Laugh, Learn and Think".



Sandra Eberhard

*President & CEO,
WBEC Metro NY & Greater DMV*



Sandra Eberhard is President and CEO of the WBEC Metro NY & Greater DMV regional affiliate of the Women's Business Enterprise National Council (WBENC), the nation's leading advocate of women-owned business and third-party certification organization. Certifying more than 2500 businesses each year as 51% women owned, operated, managed, and independently run, Sandra's operations support women business enterprises that generate more than \$7.1 billion dollars in revenue and employ more than 45,000 workers in the Maryland, Virginia, and Washington D.C. territory, and \$26.1 billion in revenue and employ more than 79,000 workers in New York State, Northern New Jersey, and Southern Connecticut.

An advocate for women's issues, Sandra has been a member of the New York Women's Agenda, a coalition of women's organizations affiliated with over 100 organizations in New York City dedicated to improving the lives of women and their families. A member since 1998, and President through 2006-2008, she served as an active advocate for women's economic empowerment.

Her 30-year career in Corporate America trained her to support the local economy and diversity so important to the national and local supply chain.

Program Speakers (cont'd)



Wendy T. Wellener

Board Member, WBEC Metro NY & Greater DMV

*Vice President Shared Services,
Dominion Energy*



Actions Speak Louder

Wendy T. Wellener is responsible for supply chain management, supplier diversity, and travel and aviation.

Wellener joined the company as a co-op student in 1986 and became a full-time employee in 1990 as an associate materials specialist in what is now Supply Chain supporting the Nuclear group.

She later served as manager-Supply Chain Services, director-Facilities Management, and director-Human Resources (Energy & Generation). She was named director-HR Workforce Strategies & Solutions in March 2010, and was promoted to vice president-Human Resources in July 2014. She assumed her current post in January 2018.

Wellener earned a bachelor's degree in industrial engineering and operations research at Virginia Tech. She is a member of the board of directors of Big Brothers Big Sisters of Greater Richmond & Tri Cities. She also serves as the executive sponsor of Dominion Energy's Women's Resource Group, We3, and chair of the Dominion Energy PAC board of directors.



Angela Dingle

*Acting President and CEO,
Women Impacting Public Policy (WIPP)*



**WOMEN IMPACTING
PUBLIC POLICY**

As Acting President and CEO of Women Impacting Public Policy (WIPP), Angela Dingle leads a national nonpartisan organization advocating on behalf of women entrepreneurs, strengthening their impact on our nation's public policy, creating economic opportunities, and forging alliances with other business organizations. She is an award-winning business owner who brings to bear 25+ years of experience consulting in the public and private sector.

She is the Author of *"Discovering Your Girl Powers: 10 Strategies to Build Confidence, Charisma and Credibility"*, Founder of the Power Pact, a professional mastermind, and Founder of DEAFICYBERCON, an ecosystem for building an equitable pipeline of career opportunities for deaf women in cybersecurity. She is CEO of Ex Nihilo Management, LLC, a management and technology consultancy specializing in governance, cyber security, management consulting, and leadership development. Angela is the Chairman of the Board for the Institute of Management Consultants USA.

Angela holds a MS in Management Information Systems from Bowie State University, a BS in Computer Science from DeVry University, is Certified in the Governance of Enterprise Information Technology (CGEIT), a Certified Myers Briggs Type Indicator (MBTI) Practitioner, and a Certified Management Consultant (CMC). Angela is a member of ISACA and Delta Sigma Theta Sorority, Inc.

Program Speakers (cont'd)

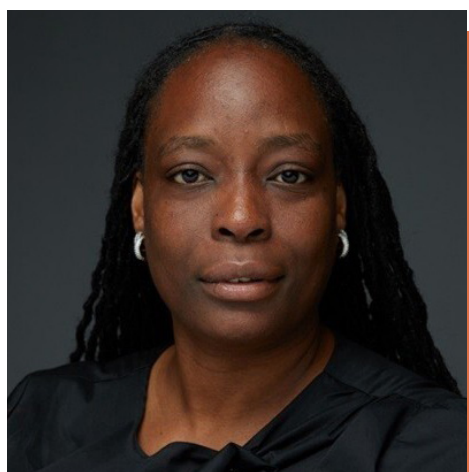


Liz Whitehead
CEO, 12PointFive

12POINTFIVE

Liz Whitehead is an award-winning business development consultant who supports certified diverse businesses in building strategies that drive new business. She leverages these certification networks: Disability:IN, NGLCC, WBENC, and NMSDC, and now, B Corp.

Her clients include Fortune 500 companies as well as business enterprises who are invested in making the most of their certifications. She supports her clients in reaching their goals through facilitation, consulting, and one-on-one coaching.



Leandra Joseph
COO, WBEC Metro NY & Greater DMV

WBEC METRO NY
GREATER DMV
WOMEN'S BUSINESS ENTERPRISE COUNCIL
BUSINESS CONTENT | BUILDING COMMUNITY | GROWTH CONNECTIONS

As COO of WBEC Metro NY and Greater DMV, Leandra Joseph directs and oversees the administration and operations fostering a sense of teamwork and collaboration in the effort to increase business opportunities for Women's Business Enterprises (WBEs).

Working effectively in a fast-paced, multi-tasking environment, Leandra helps keep projects on track, organize and follow-up on action items, manages information flow and oversees the organization IT infrastructure. Leandra is the recording secretary for board meetings and all WBEC Metro NY and Greater DMV board communications.

Originally from the Commonwealth of Dominica, Leandra has a BS in Mathematics from SUNY Plattsburgh and a BS in Electrical Engineering Technology from DeVry University.

Panel Speakers



Ann Ramakumaran

CEO, Ampcus Inc.



Anjali Ann Ramakumaran, Founder and CEO of Ampcus Inc., is a technology savvy entrepreneur with more than 20 years of contribution towards the design, development and delivery of leading-edge Technology Solutions and Human Capital Management across the globe. Under her leadership, she has cultivated Ampcus into a fast-growing Consulting and Professional Services firm.



Srilakshmi Kumar

Advisor, Artificial Intelligence and Emerging Technology Policy Working Group, USPTO



Srilakshmi Kumar joined the United States Patent and Trademark Office (USPTO) in 1999 examining applications in the telecommunications and selective visual display systems. Currently, she serves as a Supervisory Patent Examiner in the wireless telecommunications, satellite & power control, Bluetooth technology for technology center 2600. Additionally, she serves as an Advisor to the Artificial Intelligence and Emerging Technology Policy Working Group.

Prior to joining the USPTO, Sri worked for Booz, Allen & Hamilton on military satellite communications. Sri earned a Bachelor of Science in Electrical Engineering from The Pennsylvania State University.



Chantel Edwards

*Director in Cyber Operations
and Intelligence, Capital One*



Chantel Edwards is a Director in Cyber Operations and Intelligence at Capital One Financial Corporation. Capital One is a diversified bank with 65 million customer accounts worldwide and branch locations in New York, New Jersey, Texas, Louisiana, Maryland, Virginia and the District of Columbia. Capital One's subsidiaries offer a broad spectrum of financial products and services to consumers, small businesses and commercial clients through a variety of channels.

Chantel joined Capital One in late 2021 and is responsible for managing and leading projects aligned to Active Defense under the scope of Ops & Intel, Cyber and broader Tech stakeholders.

Chantel's professional background spans over 20+ years of intelligence and cyber experience, including a critical understanding of the business processes, analysis techniques, cyber threats, vulnerabilities, systems, and networks. Prior to joining Capital One, she was a federal employee with the Department of Homeland Security (DHS.) However, she began her professional career by joining the U.S. Air Force.



DMV Region **Corporate Members**

AARP
Non-Profit

Accenture
Professional Services

Amazon
Technology & Connectivity

Ampcus Inc.
Professional Services

Altria Client Services
Consumer Products

AstraZeneca
Biotech & Pharmaceutical

AT&T
Technology & Connectivity

Bank of America
Financial Services

Bristol Myers Squibb
Biotech & Pharmaceutical

Capital One
Financial Services

Consolidated Edison of NY
Utilities

Constellation Energy
Utilities

Delta Airlines
Transportation & Logistics

DC Water
Utilities

Dominion Energy
Utilities



DMV Region **Corporate Members** *(cont'd)*

EY
Professional Services

Fairfax County EDA
Professional Services

Federal Reserve Bank of Richmond
Financial Services

FreddieMac
Financial Services

JP Morgan Chase & CO
Financial Services

Leidos
Engineering

Marriott International
Travel & Hospitality

Mars Inc.
Food & Beverage

MassMutual
Financial Services & Insurance

McCormick & Co.
Food & Beverage

MWAA
Transportation & Logistics

Monumental Sports & Entertainment
Arts, Entertainment, Recreation

NEA Member Benefits
Financial Services & Insurance

Organon
Biotech & Pharmaceutical

Paramount
Art, Entertainment, Recreation

Peapod Digital Labs
Retail

Pepco, An Exelon Company
Utilities

PepsiCo
Food & Beverage

Raytheon Technologies
Engineering

Sodexo
Food & Facilities Management

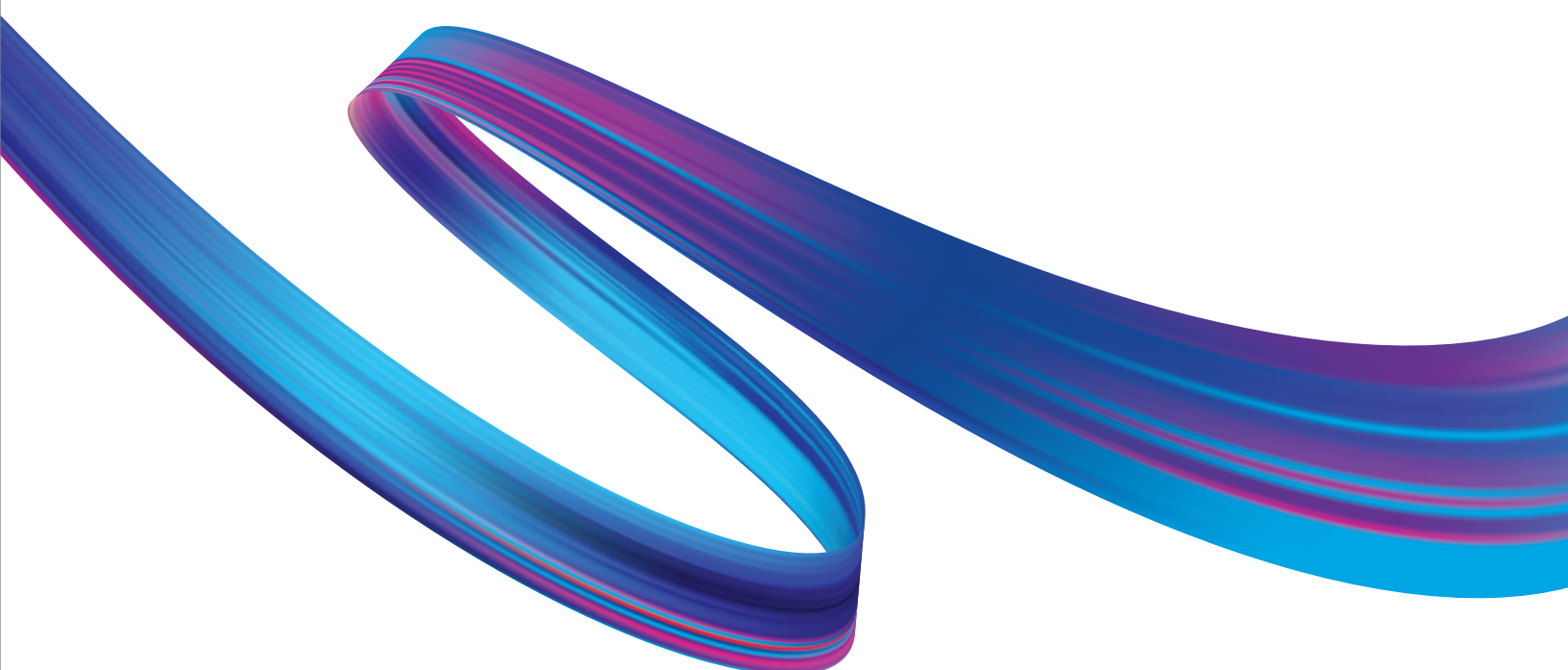
SMECO
Utilities

T. Rowe Price
Financial Services

Washington Gas
Utilities

Wells Fargo
Financial Services

WSSC Water
Utilities



Congratulations and **Thank You** to our WBEs and Corporate Members who participated in this year's Done Deals™ Challenge.

143 Productions

AARP

Accenture

Aigner Chocolates

Alliance Technology Group LLC

Amazon

AMG Online Strategies LLC

AMPCUS INC

APCO Worldwide LLC

APISource, Inc

Applied Technology Services

Aspen of DC, Inc.

AstraZeneca

Bare Associates International In.

Bingham & Taylor

Bruce Howard Contracting Inc.

Buch Construction Inc

Business Training Works Inc.

Capital One

Chantily Mediation

Coco B Productions

Collaborative Intel Agency Inc.

Consumer Insights Group

Cream

Crews Control, Inc. / Crews Control

Deque Systems Inc

Dominion Energy

DSQuorum

Eagle Hill Consulting LLC

Edge Technologies

Env Architecture & Design LLC

Fire Solutions Co Inc.

Fireline Corp

FreddieMac

Hayat Brown LLC

Hilton

Jo Kell

Joy Media Collective LLC

Kane Printing Services

Kasirer LLC

KGO, LLC

Lapine

Luminas LLC

M Luis Products, LLC

Marea Strategies LLC

Marriott

Maryland Chemical Co., Inc.

Maryland Marketing Source, Inc.

MassMutual

McKinley Marketing Partners Inc

O'Connor Consulting Services LLC

Plink Leadership

Quinn Jay Patent LLC

Rand Construction Corporation

Red Coats Inc.

Reston Limousine

Riverstone Inc

Sarah Laird Inc.

See In Colors

SFS Tools & Safety

Smarter Interiors

Smith and Company LLC

Social Lens Research LLC

Speaking of Science LLC

Sunday Morning Coffee Roasting
Company

Surface Technologies

Talentology, LLC

The Fehlig Group

The O'Riordan Bethel Law Firm, LLP

TorchLight Hire LLC

UNITEC Distribution Systems

Velvet Suite Inc

Wainer Group

Washingtonian Media

Wonderbold Labs LLC

Word Wizards, Inc.

WSSC Water